



MAHA RERA NO.
P51800034638



DPS GREENS

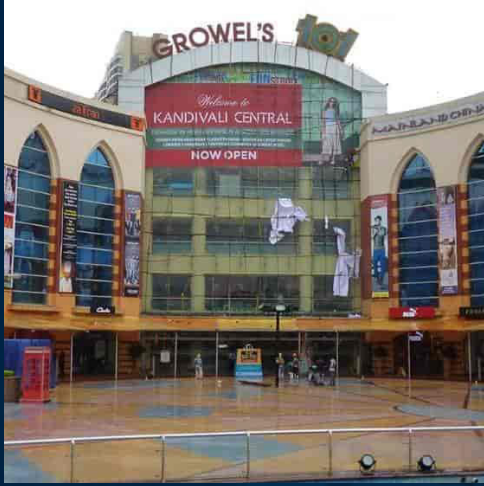
Building Your Dream



BP INFRA GROUP

Your Property, Our Priority

*Kandivali growel's mall



Project

LOCATIONS NEARBY

1km



*Kandivali express highway



*Kandivali railway station





DPS GREENS

Building Your Dream

PROJECT
HIGHLIGHTS



DPS GREENS

Building Your Dream

1,2&3 BHK

Exclusive
Apartments



Wi-Fi Enabled
Building



Lavish Entrance
Lobby



Vaastu
Compliant Flats



Fire Fighting System
& Refuge Area



Senior Citizen
seating area



2 Tier Security
System



Fitness
Center

LOCATED IN THE **HEART OF KANDIVALI,** NEAR THAKUR HOUSE

BP Infra Group is one of the leading and trusted players in Mumbai's real estate market. It is a brand that commands a premium over other real estate developers. Providing complete solutions to clients, the group is a symbol of trust and integrity built through its superior quality work, timely project completion and personalized services. We are committed and are on a constant quest to ensure that we provide that highest quality of living. We don't just build buildings but homes. We put the values and believe that you entrust on us. We aim to unfold excellence every time with our new living space.





TYPICAL FLOOR PLAN





DPS GREENS

— Building Your Dream —



Configuration	Rera Area
1 BHK	416sq
2 BHK	652sq
3 BHK	840sq

AMENITIES

That Make Your
Apartment Luxurious





DPS GREENS

— Building Your Dream —



 Fully Equipped Gymnasium

 Gas Leak Detectors

 Fitness Centre

 Open to sky Yoga Centre
on roof top

 Senior Citizen seating area

 Children's play area

 Garden

MUNISUVRAT SWAMI JAIN DERASAR



COMING IN OUR PREMISES

2 BHK

PLAN



LOCATION FEATURES



Akurli Metro Station



International Airport
Domestic airport 10.2 kms



Ruby Crescent Business Boulevard
0.2kms



Growel's Mall (Big Bazaar)
0.5 kms



Childrens Academy School
0.1 kms



Kandivali Railway Station
0.5 kms



ESIC HOSPITAL
0.2 kms



Western Express Highway
1.0 kms

LOCATION MAP



Internal Amenities

That Make Your Apartment Luxurious

RCC

- Structure designed with Earthquake Resistant Frame

ELECTRIFICATION

- Concealed electrical piping
- Renowned Modular Switches
- Standard ISI Multi strand wires with MCB
- ELCB
- Provision for AC points in all Bedroom and Living Room
- TV and Telephone points in Master Bedroom & Living Room
- Internet Provision in Master Bedroom

FLOORING

- Vitrified Flooring
- Designer Dado tiles for Bathrooms and Kitchen
- Designer Anti-skid tiles for Toilets

WALL FINISH / PAINT

- POP Finish Wall with high quality Paint

KITCHEN

- Exhaust Fan provision in Kitchen
- Parallel Black Granite Platform
- Stainless Steel Sink
- Dado tiles

DOORS

- Flush Doors with both side laminates

WINDOWS

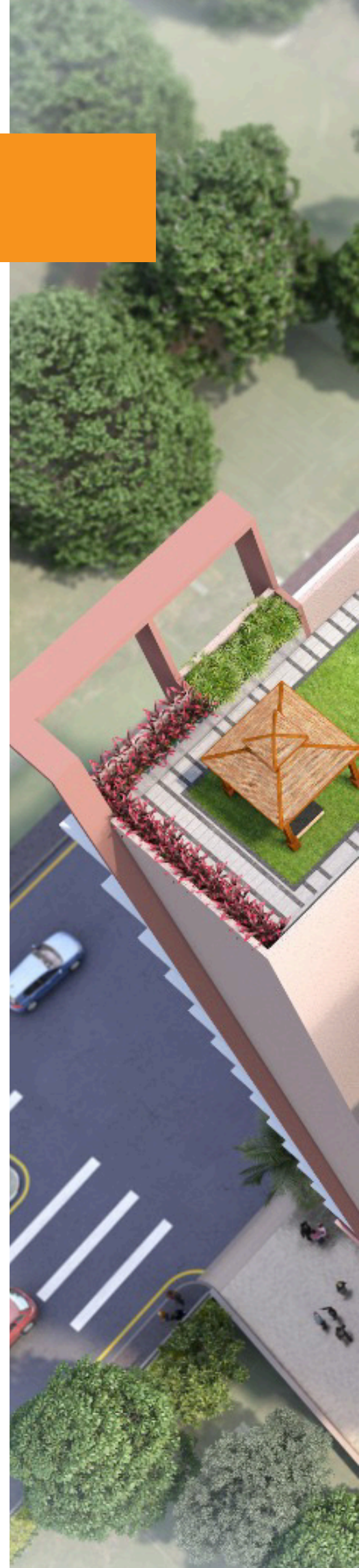
- Aluminum Powder Coated Windows

TOILETS & BATHROOMS

- Concealed Plumbing
- Wash Basin with Granite Counter
- Bathroom Glazing

SECURITY

- Intercom for each apartment
- CCTV Cameras for common areas and lobbies
- Security Cabin







A Project Redeveloped by



BP INFRA GROUP

—Your Property, Our Priority—

OUR ASSOCIATES

PLANNING, LIASONING & DESIGNING : CHIRAG S. RAYANI

RCC : IRA STRUCTURAL CONSULTANTS

CA & RERA CONSULTANT : CA, MEENESH SHETTY

PROJECT ADDRESS:

DPS GREENS

Ashok Nagar Rd., Kandivali (E), Mumbai 400101.

BOOKING OFFICE ADDRESS:

BP Infra

603, Ruby Crescent Business Boulevard, Ashok
Chakravarti Road,
Ashok Nagar, Kandivali (E), Mumbai, Maharashtra
400 101.

for sales Enquiry

+91 89767 74806


DPS GREENS
—Building Your Dream—

Disclaimers: This brochure is not a legal document and does not constitute an offer or contract of any nature whatsoever between the Promoter/Developer and the recipient. All rendered visuals, images and maps are artist's conceptions and for illustration purposes only, unless otherwise mentioned. All colours, furnitures, fixtures, shown are for aesthetic representation purpose only and are not part of the flat offer for sale. It only describes the conceptual plan to convey the intent and purpose of the Promoter/Developer. The detail mentioned in this brochure are tentative and are subject to approval. The Promoter/Developer reserves the right to modify and vary the detail mentioned herein at its sole discretion. The Promoter/Developer does not warrant or assume any legal liability for the accuracy, completeness or usefulness of any information disclosed. This project is a "New Project" and is registered as 'DPS GREEN' under MahaRERA Registration No.P51800034638 available at <http://maharera.mahaonline.gov.in/>